



Coral Reefs

by Erika Sparks

HOUGHTON MIFFLIN



Coral Reefs



by Erika Sparks



HOUGHTON MIFFLIN HARCOURT
School Publishers

PHOTOGRAPHY CREDITS: Cover Frederic Pacorel/Stock Image/Jupiter Images. 1 ImageState/Alamy. 2-3 (border) © 2007 Jupiter Images. 2 Liquid-Light Underwater Photography/Alamy. 3 James Watt/Index Stock Imagery/Jupiter Images. 4 Frederic Pacorel/Stock Image/Jupiter Images. 5 Pure Stock/Jupiter Images. 6-7 Jeff Hunter/Getty Images. 8 David Burdick/NOAA. 9 AP Photo/National Marine Fisheries Service via Honolulu Star Bulletin. 10 ImageState/Alamy.

Copyright © by Houghton Mifflin Harcourt Publishing Company

All rights reserved. No part of this work may be reproduced or transmitted in any form or by any means, electronic or mechanical, including photocopying or recording, or by any information storage and retrieval system, without the prior written permission of the copyright owner unless such copying is expressly permitted by federal copyright law. Requests for permission to make copies of any part of the work should be addressed to Houghton Mifflin Harcourt School Publishers, Attn: Permissions, 6277 Sea Harbor Drive, Orlando, Florida 32887-6777.

Printed in China

ISBN-13: 978-0-547-02891-0

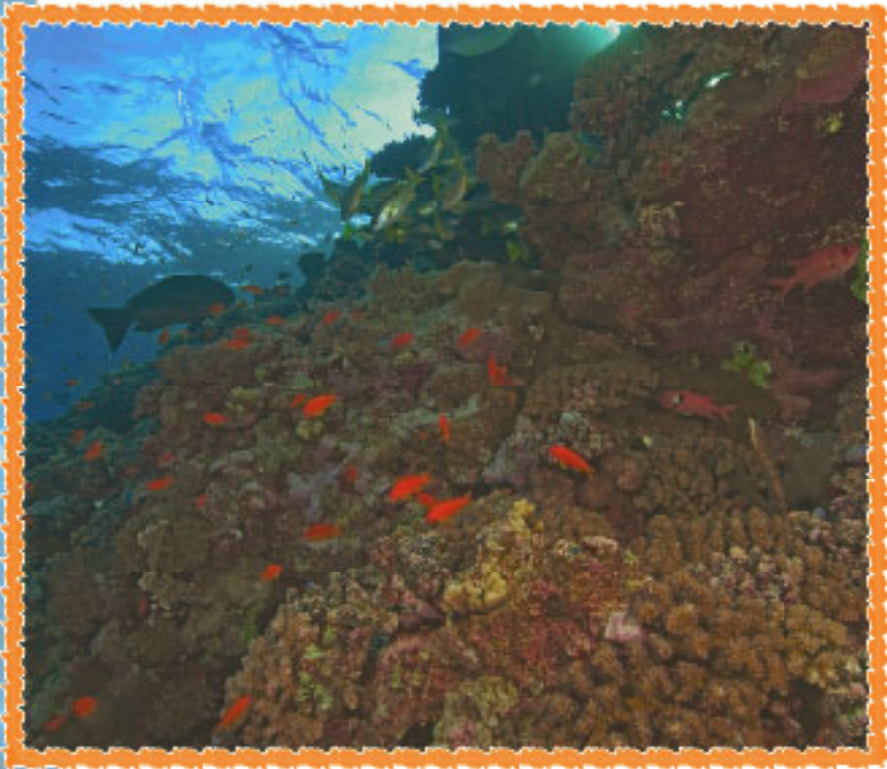
ISBN-10: 0-547-02891-1

1 2 3 4 5 6 7 8 0940 18 17 16 15 14 13 12 11

If you have received these materials as examination copies free of charge, Houghton Mifflin Harcourt School Publishers retains title to the materials and they may not be resold. Resale of examination copies is strictly prohibited.

Possession of this publication in print format does not entitle users to convert this publication, or any portion of it, into electronic format.

- ▶ Coral reefs are home to many plants and animals.
- ▶ Coral reefs are hard and feel like stone.
But they are made by living animals.



- ▶ Coral is an animal that is wrapped inside a shell.
- ▶ When this animal dies, it leaves behind its empty shell.



- ▶ New coral grows on top of the empty coral shells.
- ▶ When these coral die, more coral grows on top of their shells.



- ▶ Coral live in large groups.
These groups stay in one place.
- ▶ After many years, the coral shells grow higher and wider in the water.
This makes a coral reef.



- ▶ Coral reefs slow down moving water and make calm places in the ocean.
- ▶ Plants and animals like living in these calm places.
Coral reefs are home to **millions** of animals.



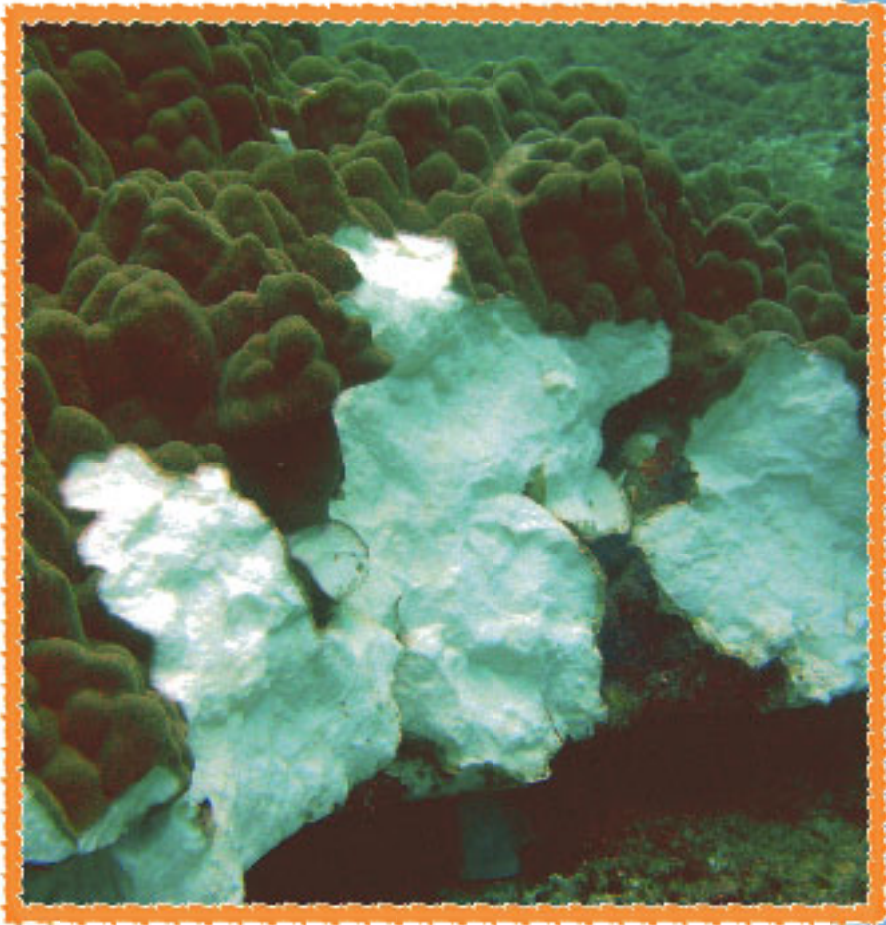
- ▶ Jellyfish **drift** past coral reefs.
 - Fish **decide** where to lay eggs.
 - ▶ When it's time to eat, turtles have many **choices!**
- There is lots of food around coral reefs.



- ▶ But coral reefs need help, too. Sometimes people put **disgusting** things in the oceans, such as trash.
- ▶ These things make coral reefs **weaker**. They also hurt the animals that live there.



- ▶ Sometimes people drive their boats over coral reefs.
- ▶ This breaks some of the coral and stops it from growing.



- ▶ People need to stop putting trash in the ocean.
 - ▶ They need to be more careful about driving their boats.
- Making these **simple** changes will help coral reefs and all the animals that live there.



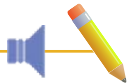
Responding



TARGET VOCABULARY **Word Builder**

The word **choices** uses the letter -s at the end. What other words do you know that can use this suffix? Copy and complete the chart below.

Words	-s Word
choice ?	choices ?



Write About It

Text to Self How did you decide what to wear today? Did you pick out your favorite shirt? Did you think about the weather? Write a few sentences that tell how you decided what to wear today.



TARGET VOCABULARY

choices

decide

disgusting

drift

millions

simple

weaker

wrapped



TARGET STRATEGY

Monitor/Clarify

Find ways to figure out what doesn't make sense.



Which vocabulary word tells how a peanut butter and meatball sandwich would taste?

Level: I

DRA: 16

Science

Strategy:

Monitor/Clarify

Word Count: 266

2.2.10 Build Vocabulary

HOUGHTON MIFFLIN
Online Levelled Books



ISBN-13: 978-0-547-02891-0
ISBN-10: 0-547-02891-1



9 780547 028910



HOUGHTON MIFFLIN

1033019